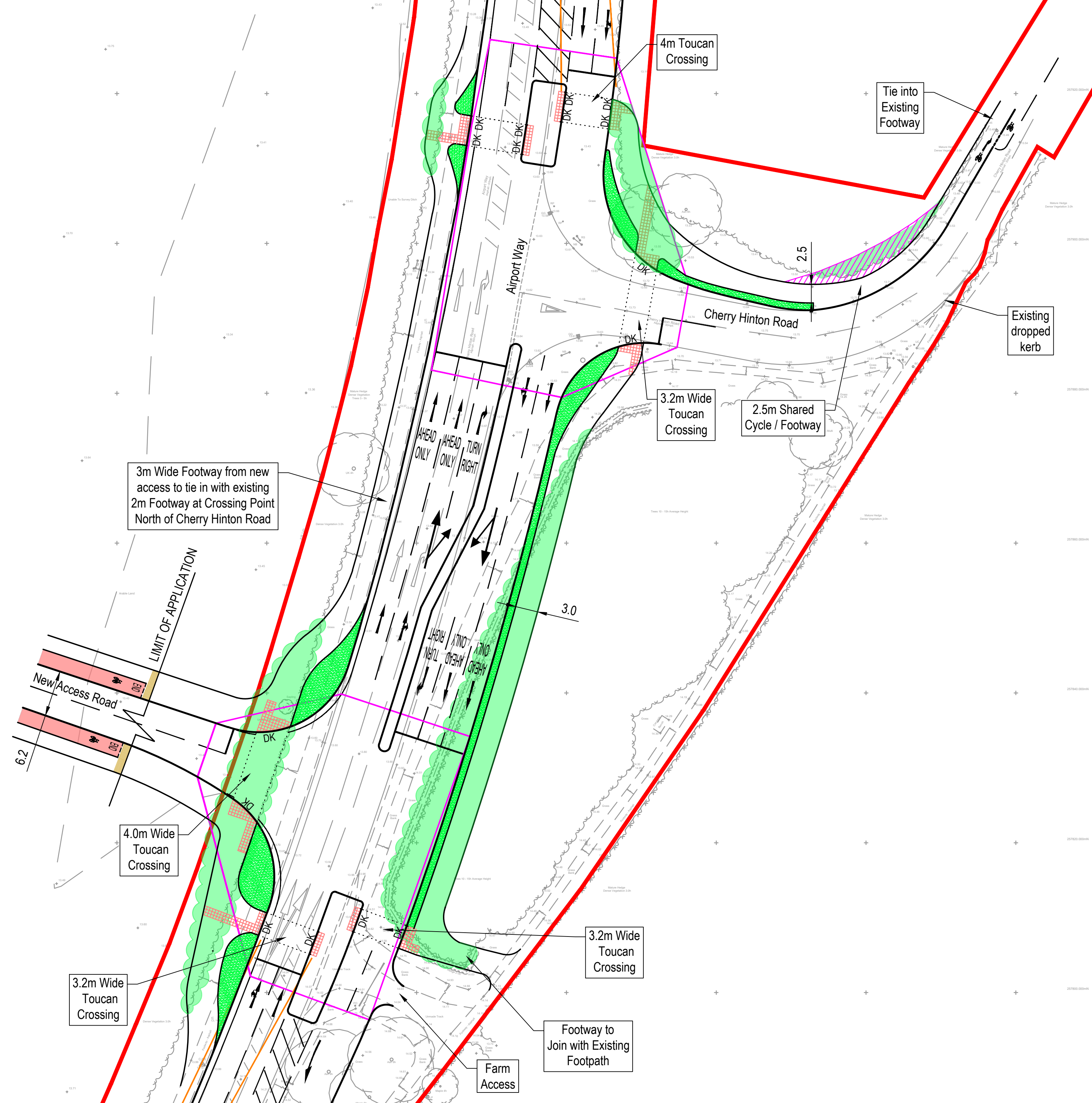


NOTES

1. LOCATION OF HIGHWAY BOUNDARY IS PRODUCED BY CAMBRIDGESHIRE COUNTY COUNCIL.
2. BASED ON TOPOGRAPHICAL SURVEY DATA (REF: SURVEY SOLUTIONS, 18121EA-01).
3. ALL PROPOSALS SUBJECT TO DETAILED DESIGN.
4. THE EXISTING SPEED LIMIT IS 60mph. IT IS PROPOSED THAT THE SPEED LIMIT IS REDUCED TO 40mph ALONG AIRPORT WAY.
5. ANY STREET LIGHTING TO BE DESIGNED IN ACCORDANCE WITH CAMBRIDGE COUNTY COUNCILS REQUIREMENTS.
6. WHERE AFFECTED BY THE PROPOSALS, ALL EXISTING SERVICES ARE TO BE DIVERTED / PROTECTED AS DETERMINED BY LIAISON WITH THE UTILITY UNDERTAKERS AND / OR LOCAL HIGHWAY AUTHORITY.
7. EXISTING VEGETATION WHICH MAY BE LOCATED IN THE VISIBILITY SPLAYS IS TO BE REMOVED.
8. FORWARD VISIBILITY ON CHERRY HINTON ROAD REFLECTS THE EXISTING SITUATION. NO REAR SHUNTS RECORDED IN THE LAST 5 YEARS AT THIS LOCATION.

LEGEND

- HIGHWAY BOUNDARY
- JUNCTION INTERVISIBILITY (DMRB)
- VISIBILITY TO JUNCTION (DMRB - 40mph - 120m)
- ▨ FORWARD VISIBILITY (MFS - 30mph - 40m)
- VEGETATION TO BE REMOVED
- ▨ TACTILE PAVING - CONTROLLED CROSSING
- ▨ TACTILE PAVING - UNCONTROLLED CROSSING
- ▨ TACTILE PAVING - CORDUROY CYCLE WARNING STRIP
- DK DK PROPOSED DROPPED KERBS
- ▨ GREEN EDGE



K	CYCLEWAY AMENDMENTS	07.11.19	AJF	KS	EP
J	CYCLEWAY AMENDMENTS	09/10/19	AJF	SC	WW
H	LAYOUT AMENDED FOLLOWING ROAD SAFETY AUDIT	16.08.19	CAC	SJC	KS
G	ACCESS ARMS INCREASED TO 6.2m	29.01.18	DF	KT	EP
F	UPDATED AS PER COMMENTS FROM RSA STAGE 1	23.01.18	CAC	KT	RC
E	ACCESS ROAD CARRIAGEWAY NARROWED TO 6.1m & FOOTWAY CHANGED TO 2m FOOTWAY / 2.1m CYCLEWAY	21.12.17	CAC	KT	SC
D	NEW ACCESS ROAD ALIGNED WITH MASTERPLAN DESIGN	13.12.17	CAC	KT	SC
C	UPDATED AS PER COMMENTS	10.11.17	CAC	KT	SC
B	UPDATED AS PER COMMENTS	02.11.17	JC	KT	
A	UPDATED AS PER COMMENTS	01.08.17	AL	KT	
Mark	Revision	Date	Drawn	Chkd	Appd

SCALING NOTE: Do not scale from this drawing. If in doubt, ask.
 UTILITIES NOTE: The position of any existing public or private sewers, utility services, plant or apparatus shown on this drawing is believed to be correct, but no warranty to this is expressed or implied. Other such plant or apparatus may also be present but not shown. The Contractor is therefore advised to undertake his own investigation where the presence of any existing sewers, services, plant or apparatus may affect his operations.

Drawing Issue Status
PRELIMINARY

**LAND NORTH OF CHERRY HINTON
 ACCESS STRATEGY - JUNCTION 1
 AIRPORT WAY / CHERRY HINTON ROAD
 ACCESS SIGNALISED JUNCTION**

Client
 MARSHALL GROUP PROPERTIES LTD
 & ENDURANCE ESTATES
 LAND LTD.



Date of 1st Issue	Designed	Drawn
27/06/2017	SC	GS
A1 Scale	Checked	Approved
1:500	SC	
Drawing Number	Revision	
37305/5501/001	K	